



Palo Verde 2697

	Bed	Bath	Sq. Ft.	Stories	Garage	
	4	3	2697	1	2-3	

This Home Plan is available at the following Talas Homes Communities:

»Sun Valley Ranch

I-10 West to Palo Verde Road/Sun Valley Parkway. Turn North to Van Buren, turn West, to 299th Avenue, turn North to Roosevelt, turn West on to property.

»Buckeye Ranch

I-10 West to 339th Avenue, turn South to Buckeye Road, turn West to 355th Avenue. Turn South on 355th Avenue to Buckeye Ranch Road, turn West on to property. For Sales Office, visit Sun Valley Ranch location.

»The Ranchettes

I-10 West to 339th Avenue; head south, turn right on Van Buren, south on 363rd Avenue. Turn left(east) on Lincoln St; property located on the Southwest corner of 363rd & Lincoln. For Sales Office, visit Sun Valley Ranch location.

For more information please contact a New Home Counselor:

623.327.0709



Elevation A 3 Car Garage Option



Elevation A



Elevation B



Elevation B 3 Car Garage Option

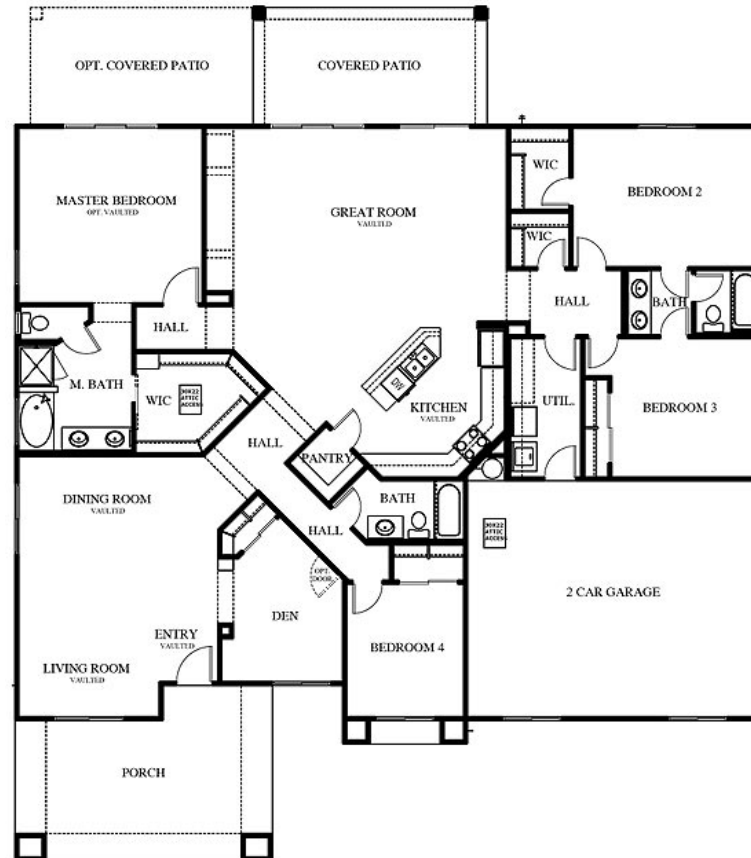


Palo Verde 2697

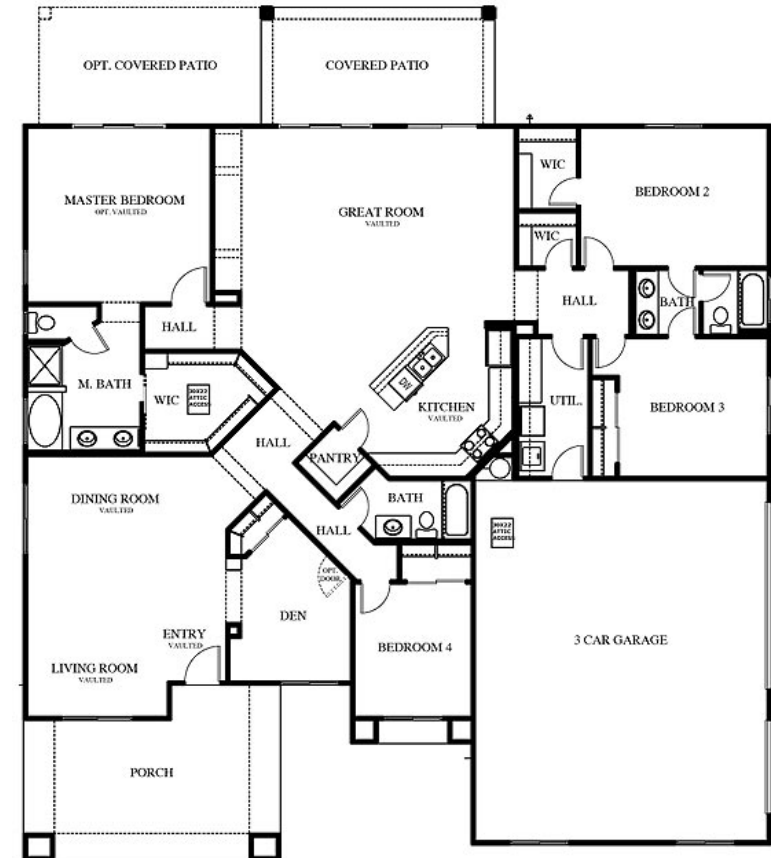
Bed	Bath	Sq. Ft.	Stories	Garage
4	3	2697	1	2-3

Floor Plans

Standard Floor Plan



Floor Plan W/ Optional 3 Car Garage



Optional Master Suite II and Powder Room

